



75KVA

**SOUNDPROOF & WEATHERPROOF
AC DIESEL GENERATORS**

MODEL : ATP - 75S

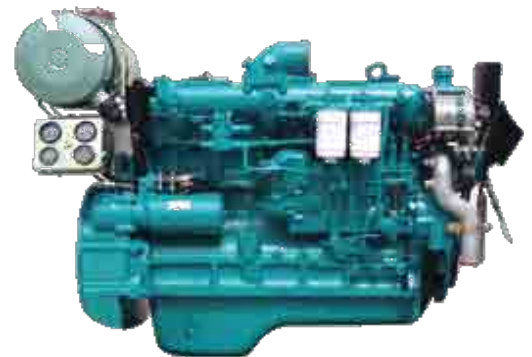
**INDUSTRIAL
SERIES**





- Compact designed soundproof and weatherproof canopy .
- All canopy parts are designed with modular principles.
- Detachable designed doors provide most accessible for maintenance and repairs.
- All metal canopy parts are factory rustproof using special powder paint coating.
- Single point lifting eye designed for easy mobilization.
- Transparent glass control panel viewing window.
- Optimized ventilation design provides better generator cooling.
- Provision for external fuel tank for extended operation through fuel intake & return valves.

- Cooperated with FEV, German
- Solid crankshaft, cylinder and cylinder head made of alloy cast iron, sliding bearing, small bulk, light weight, less vibration, low noise, high reliability, overhaul interval is over 12000 hours.
- necking combustion technique pump, I-type high pressure, low inertia, injector with small bore more complete combustion, low fuel consumption, oil seal of valve added, Seal technology for piston ring and valve oil-sealing technique, low fuel consumption.
- Optional electronic governor pump
- Perfect G-drive for 40-80 KW generator sets



- Over-rated, brushless, rotating exciter with solid state AVR.
- Class H winding insulations provide high temperature resistance.
- Standard degree of protection IP21.
- Self exciting and self regulating.
- Factory impregnated epoxy varnished.
- Heavy duty steel frame cast-iron cover.
- Stator grease insulation covered.
- Flywheel location cooling fan.

- The PLC Generator set controller uses micro-processing intelligent and network technique which can carry out precision measure, constant value adjustment, timing and threshold setting and etc. of multiple digital parameters.
- Carry out functions including automatic start/stop, data measure, alarms indicates service affecting faults, and compatible with most standard ATS.
- Uses LCD display, optional Chinese and English display with easy operation, reliable and durable.
- Parameters can be set in site or in monitor center & can not lose even power off.
- Easy to replace with a plug-in type socket at the back of the control module and low cost to the end user.
- Automatic shutdown on fault conditions such us high temp, low oil pressure, over & under speed (RPM), over load & low fuel stock level.
- Another set of analog gauges for engine status monitoring including un-resetable run hours gauges to prevent tampering.
- Provide Volt-adjust knob, and panel light designed for operators convenient during night uses.



SPECIFICATIONS			
MODEL		ATP - 75S	
- ALTERNATOR			
Make & Model		ATP SLG-224C-1 ϕ / SLG-224F-3 ϕ	
Frequency	Hz	50	60
Output Rating (KVA)	Continuous	65	75
	Standby	70	82.5
No. of Phases		1-Phase (2 Wires) or 3-Phase (4 Wires)	
Rated Voltage	V	200~240	
Power Factor		0.8 (Lagging)	
Voltage Regulation	%	Within +/- 1.5	
Excitation		Brushless, Rotating Exciter (with A.V.R.)	
Insulation		Class H	
- ENGINE			
Make & Model		ATP - YC6108D	
Type		Vertical Inline, Water-cooled, 4-Stroke Direct Injected	
Output Rating	Kw/rpm	70/1500	77/1800
No. of Cylinders-Bore x Stroke	mm	6 - 108 x 125	
Piston Displacement	L	6.871	
Fuel		ASTM No.2 Diesel Fuel or Equivalent	
Fuel Consumption @75% load	L/h	10.8	11.9
Lube Oil Capacity	L	17	
Coolant Capacity	L	28.15	
Battery Capacity	V-Ah	12V-100Ah (2pcs)	
Fuel Tank Capacity	L	140	
- UNIT			
Dimensions	Length mm	2810	
	Width mm	1000	
	Height mm	1400	
Dry Weight	kg	1800	
- SOUND LEVEL			
dB @ 7m		68	70

(Specifications are subject to change without prior notice.)



Continuous running at variable load for duration of an emergency. No overload is permitted on these ratings.

STANDBY:

Continuous running at variable load for unlimited periods with 10% overload available for 1 hour in any 12 hour period.

PRIME: